

ABSOLUTE AUCTION

MAY
SATURDAY
17TH
10:00 AM

1722 HISESVILLE BEARWALLOW ROAD - CAVE CITY, KY

20.17 +/- ACRES FRONTAGE ON 2 ROADS - 5 TRACTS

**TRACT 1: 0.80 +/- ACRES, 2
BEDROOM HOME - ATTACHED
GARAGE - BLACKTOP DRIVE -
MATURE SHADE TREES FRONTAGE
ON HISESVILLE BEARWALLOW
ROAD & BESSIE BASTIN ROAD**



**TRACT 2: 10.35 +/-
ACRES, BARN - FRONTAGE
ON HISESVILLE
BEARWALLOW ROAD &
BESSIE BASTIN ROAD**

ALL BIDDERS MUST REGISTER WITH PHOTO ID. 10% BUYERS PREMIUM ON SITE, PAYMENT IN FULL DAY OF AUCTION WITH CASH OR CHECK. ALL PERSONAL PROPERTY SOLD AS IS WHERE IS WITH NO WARRANTY EXPRESSED OR IMPLIED. ALL ANNOUNCEMENTS MADE DAY OF AUCTION TAKE PRECEDENCE OVER ALL ADVERTISEMENTS. SELLERS NOR AGENT RESPONSIBLE FOR ACCIDENTS.



**FOR MORE INFO
CALL AUCTIONEER:
KENNY ISENBURG
(270)-528-7892**

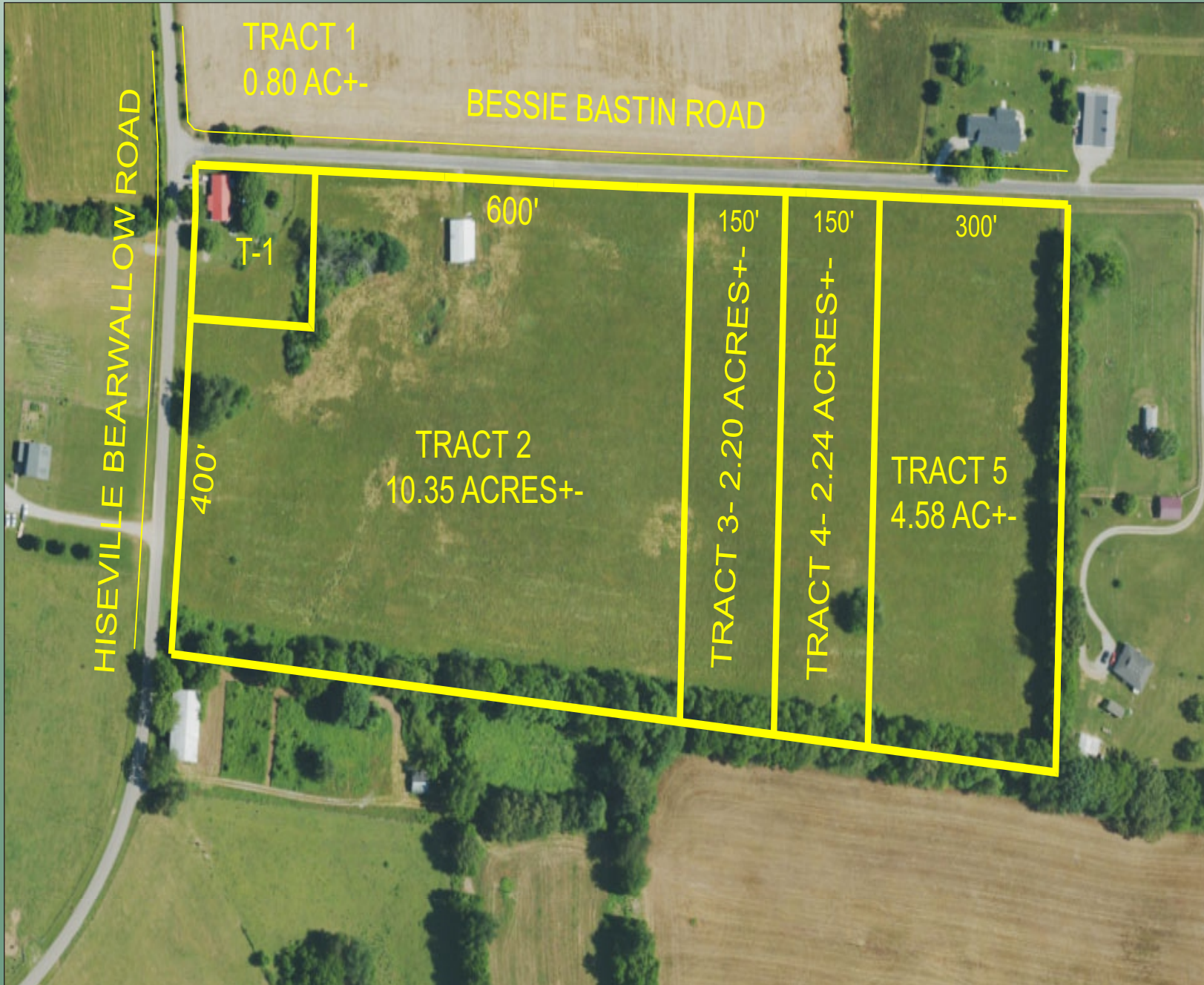
MILLS
REAL ESTATE & AUCTION CO.
LLC
SCOTTSVILLE - GAMALIEL - GLASGOW

Russell Mills
Auctioneer
270-237-7625

270-618-7800

Sandy Mills
Broker/Realtor
270-618-9560

WWW.RSMILLSAUCTIONS.COM



**TRACT 3: 2.20 +/- ACRES
FRONTAGE ON BESSIE BASTIN ROAD**

**TRACT 4: 2.24 +/- ACRES FRONTAGE
ON BESSIE BASTIN ROAD**

**TRACT 5: 4.58 +/- ACRES FRONTAGE
ON BESSIE BASTIN ROAD**



WWW.RSMILLSACTIONS.COM