

AUCTION

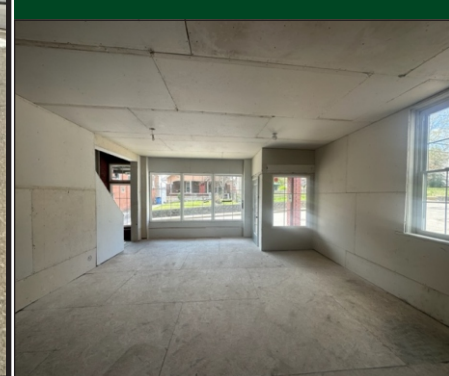
MAY

TUESDAY

7TH
5:30
PM

229 W. WASHINGTON STREET - GLASGOW, KY

2,800+/- SQFT.
COMMERCIAL
BUILDING



PROPERTY SALES LIVE ONLY, SITTING ON APPROXIMATELY 0.15+/- ACRES. A LOT OF RENOVATIONS HAVE BEEN DONE AND CAN BE MADE INTO THAT SPACE YOU ARE LOOKING FOR, BEING AS IT CAN BE USED FOR MANY USES! THIS BUILDING HAS A LOT OF POTENTIAL AND THE HARD WORK IS ALREADY DONE FOR YOU! WITH A FEW MORE MINOR DETAILS, THIS CAN BE THE LOCATION OF YOUR DREAMS LOCATED JUST OFF OF THE SQUARE IN GLASGOW, KY.

ALL BIDDERS MUST REGISTER WITH A PHOTO ID. REAL ESTATE- 15% NON REFUNDABLE DEPOSIT DUE DAY OF AUCTION. BALANCE DUE ON OR BEFORE 45 DAYS. 10% BUYERS PREMIUM ON REAL ESTATE. POSSESSION WITH DEED. 2024 TAXES PRORATED AT CLOSING. ALL HOMES BUILT BEFORE 1978 MAY CONTAIN LEAD BASE PAINT. PROSPECTIVE BUYERS ARE GIVEN 10 DAYS PRIOR TO AUCTION TO CONDUCT LEAD BASE PAINT TEST. BUYER WILL BE REQUIRED TO SIGN A WAIVER OF ALL POST SALE INSPECTIONS. ALL ITEMS SELLING AS-IS WHERE-IS WITH NO WARRANTY EXPRESSED OR IMPLIED. ALL ANNOUNCEMENTS MADE DAY OF AUCTION TAKE PRECEDENCE OVER ALL ADVERTISEMENTS. SELLERS NOR AGENT RESPONSIBLE FOR ACCIDENTS.

SELLERS: K & M SERVICES LLC

MILLS
REAL ESTATE & AUCTION CO.
SCOTTSVILLE - GAMALIEL - GLASGOW
270-618-7800



FOR MORE INFO CALL LISTING AUCTIONEER: JESSE MUSE, 270-670-9333 Russell Mills Auctioneer 270-237-7625 / Sandy Mills Broker 270-618-9560

WWW.RSMILLSAUCTIONS.COM