

HOUSE - TIMBER - 82+/- ACRES

AUCTION

APR

SATURDAY

27TH
10:00 AM

267 UNION HILL SCHOOL ROAD-SUMMER SHADE, KY

TRACT 1- 1,176+/- SQFT BRICK HOME WITH BASEMENT. THIS HOME IS EQUIPPED WITH 3 BEDROOMS, 1 1/2 BATHROOMS, AND A DETACHED GARAGE. THIS HOME COMES WITH APPROXIMATELY 0.657+/- ACRES.



TRACT 2 - 17.322+/- ACRES

TRACT 3 - 22.276+/- ACRES

TRACT 4 - 26.175 ACRES

TRACT 5 - 16.259+/- ACRES

SELLER: JEFF HARRIS ESTATE

ALL BIDDERS MUST REGISTER WITH A PHOTO ID. REAL ESTATE - 15% NON REFUNDABLE DEPOSIT DUE DAY OF AUCTION. BALANCE DUE ON OR BEFORE 45 DAYS. 10% BUYERS PREMIUM ON REAL ESTATE. POSSESSION WITH DEED. 2024 TAXES PRORATED AT CLOSING. ALL HOMES BUILT BEFORE 1978 MAY CONTAIN LEAD BASE PAINT. PROSPECTIVE BUYERS ARE GIVEN 10 DAYS PRIOR TO AUCTION TO CONDUCT LEAD BASE PAINT TEST. BUYER WILL BE REQUIRED TO SIGN A WAIVER OF ALL POST SALE INSPECTIONS. ALL ITEMS SELLING AS-IS WHERE-IS WITH NO WARRANTY EXPRESSED OR IMPLIED. ALL ANNOUNCEMENTS MADE DAY OF AUCTION TAKE PRECEDENCE OVER ALL ADVERTISEMENTS. SELLERS NOR AGENT RESPONSIBLE FOR ACCIDENTS.

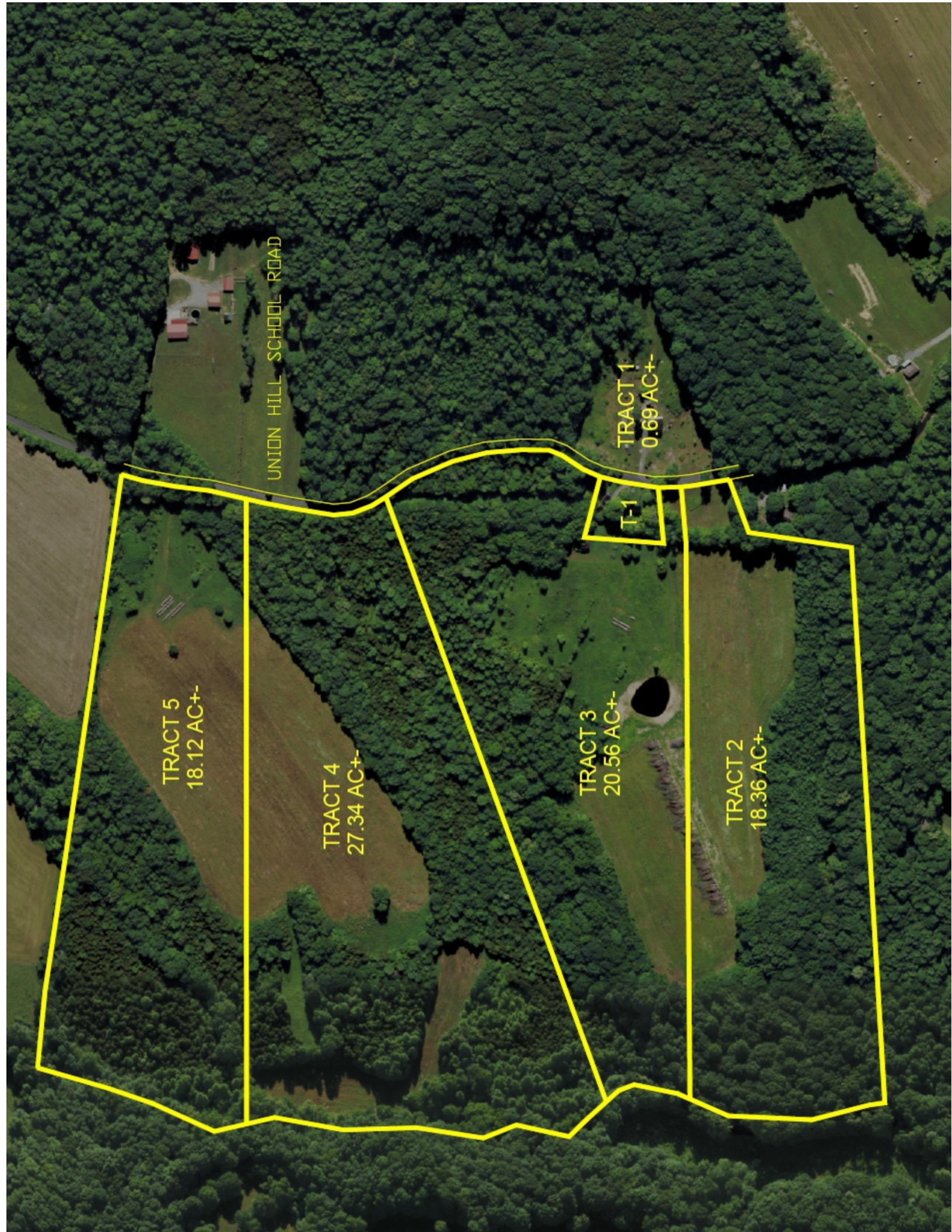



MILLS
REAL ESTATE & AUCTION CO. LLC
SCOTTSDALE - GAMALIEL - GLASGOW
270-618-7800

FOR MORE INFO CALL LISTING AUCTIONEER: JESSE MUSE, 270-670-9333

Russell Mills Auctioneer 270-237-7625 // Sandy Mills Broker 270-618-9560

WWW.RSMILLSAUCTIONS.COM



UNION HILL SCHOOL ROAD

TRACT 5
18.12 AC+-

TRACT 4
27.34 AC+-

TRACT 3
20.56 AC+-

TRACT 2
18.36 AC+-

TRACT 1
0.69 AC+-

T-1