

ONLINE ONLY ABSOLUTE AUCTION

**BIDDING BEGINS:
SATURDAY
APRIL 19TH @ 10AM**

BIDDING WILL BEGIN TO CLOSE:

**APR
TUESDAY
29TH
5:30
PM**

1400 PEA RIDGE ROAD - SCOTTSVILLE, KY



**47.50+/- ACRES SELLING IN 1 TRACT - 3 BEDROOM MOBILE HOME -
COUNTY WATER METER AND ELECTRIC ON SITE - OPEN PASTURE LAND -
WOODED LAND - CREEK FRONTAGE - ACCESS FROM EASEMENT TO PEA RIDGE
ROAD**

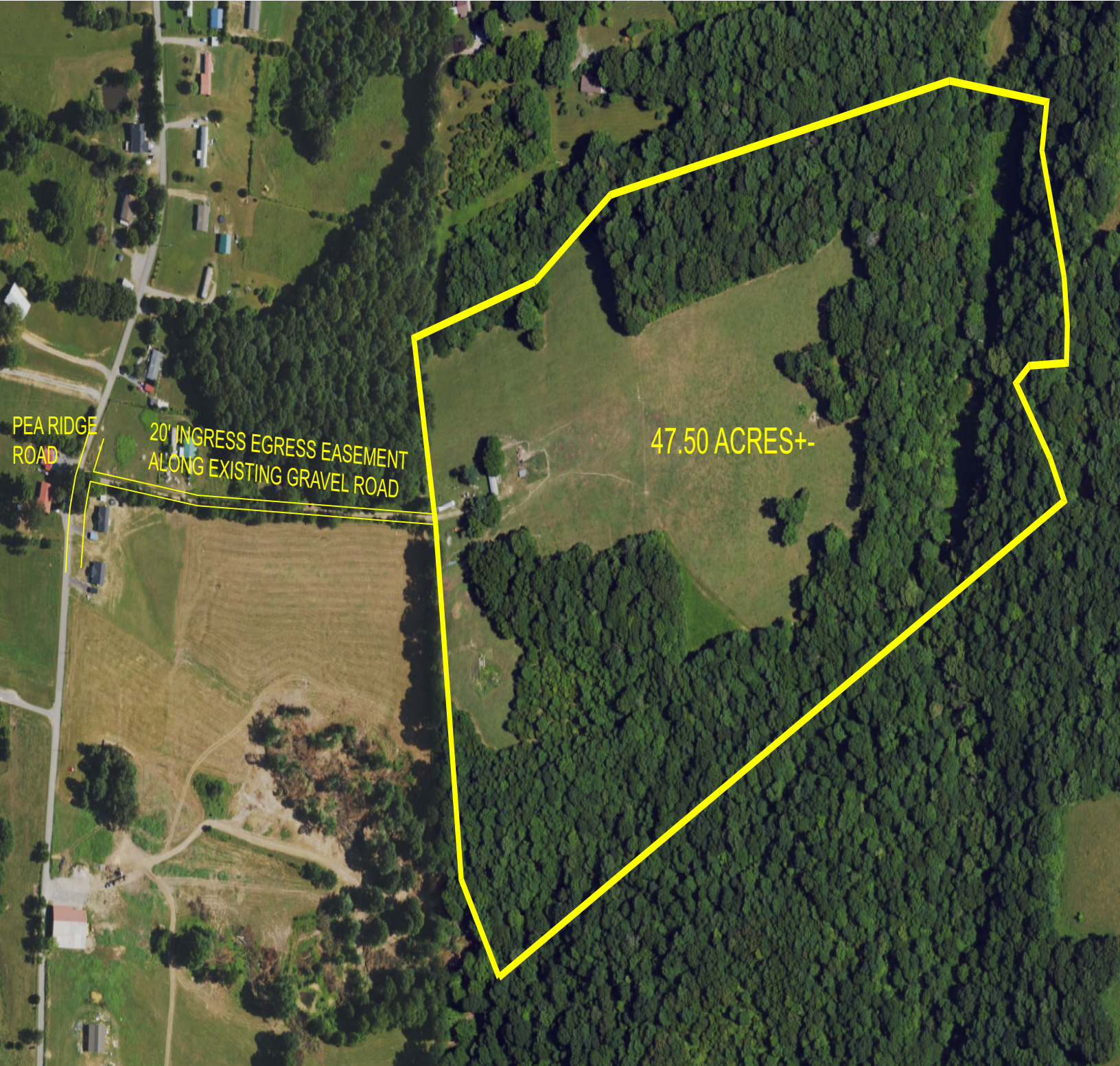


**ALL BIDDERS MUST REGISTER ONLINE WITH A CREDIT CARD. REAL ESTATE- 15%
NON REFUNDABLE DEPOSIT DUE WITHIN 24 HRS OF AUCTION ENDING. BALANCE
DUE ON OR BEFORE 30 DAYS. 10% BUYERS PREMIUM ON REAL ESTATE.
POSSESSION WITH DEED. 2025 TAXES PRORATED AT CLOSING. ALL HOMES
BUILT BEFORE 1978 MAY CONTAIN LEAD BASE PAINT. PROSPECTIVE BUYERS
ARE GIVEN 10 DAYS PRIOR TO AUCTION TO CONDUCT LEAD BASE PAINT TEST.
BUYER WILL BE REQUIRED TO SIGN A WAIVER OF ALL POST SALE INSPECTIONS.
ALL ITEMS SELLING AS-IS WHERE-IS WITH NO WARRANTY EXPRESSED OR
IMPLIED. ALL ANNOUNCEMENTS MADE DAY OF AUCTION TAKE PRECEDENCE
OVER ALL ADVERTISEMENTS. SELLERS NOR AGENT RESPONSIBLE FOR
ACCIDENTS.**

FOR MORE INFO CALL AUCTIONEER: RUSSELL MILLS, 270-237-7625

MILLS
REAL ESTATE & AUCTION CO. LLC
SCOTTSVILLE - GAMALIEL - GLASGOW
Russell Mills Auctioneer **270-618-7800**
Sandy Mills Broker/Realtor **270-618-9560**

WWW.RSMILLSAUCTIONS.COM



ALL BIDDERS MUST REGISTER ONLINE WITH A CREDIT CARD. REAL ESTATE- 15% NON REFUNDABLE DEPOSIT DUE WITHIN 24 HRS OF AUCTION ENDING. BALANCE DUE ON OR BEFORE 30 DAYS. 10% BUYERS PREMIUM ON REAL ESTATE. POSSESSION WITH DEED. 2025 TAXES PRORATED AT CLOSING. ALL HOMES BUILT BEFORE 1978 MAY CONTAIN LEAD BASE PAINT. PROSPECTIVE BUYERS ARE GIVEN 10 DAYS PRIOR TO AUCTION TO CONDUCT LEAD BASE PAINT TEST. BUYER WILL BE REQUIRED TO SIGN A WAIVER OF ALL POST SALE INSPECTIONS. ALL ITEMS SELLING AS-IS WHERE-IS WITH NO WARRANTY EXPRESSED OR IMPLIED. ALL ANNOUNCEMENTS MADE DAY OF AUCTION TAKE PRECEDENCE OVER ALL ADVERTISEMENTS. SELLERS NOR AGENT RESPONSIBLE FOR ACCIDENTS.

FOR MORE INFO CALL AUCTIONEER: RUSSELL MILLS, 270-237-7625

MILLS
REAL ESTATE & AUCTION CO. LLC
SCOTTSVILLE - GAMALIEL - GLASGOW

Russell Mills
Auctioneer
270-237-7625

270-618-7800

Sandy Mills
Broker/Realtor
270-618-9560

WWW.RSMILLSAUCTIONS.COM