



# THE JUANITA WEISS ESTATE ABSOLUTE AUCTION

**NOV**  
**SATURDAY**  
**15<sup>TH</sup>**  
**10:00 AM**

**MT UNION RD & HADE BELL RD - SCOTTSVILLE KY**

**241.89 +/- ACRES - 23 TRACTS**  
**HOME SITES & PRIME FARMLAND**



**Russell Mills** Auctioneer 270-237-7625

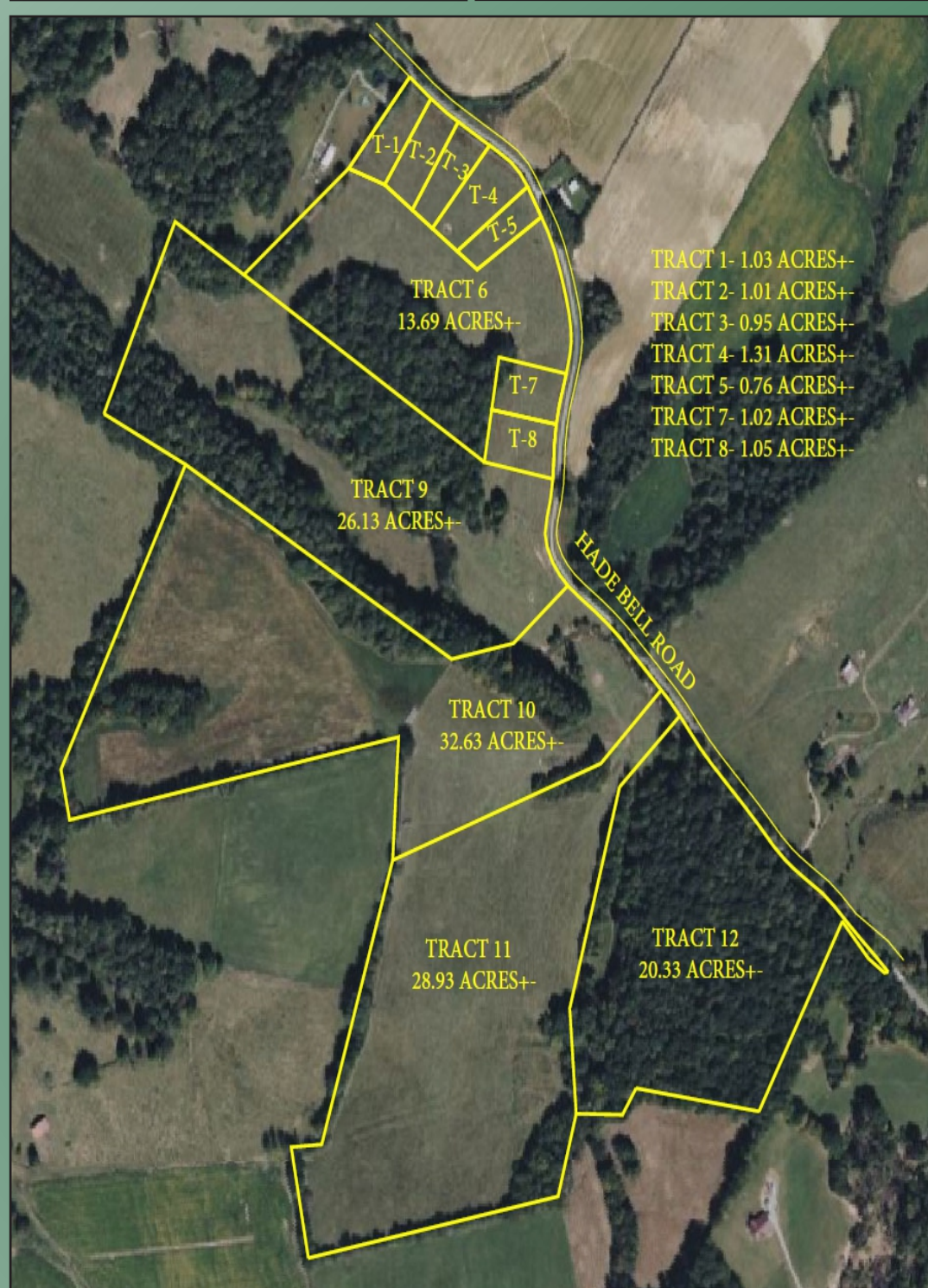
**Sandy Mills** Broker/Realtor 270-618-9560

**FOR MORE INFO CALL AUCTIONEER: JOHNNY HOBDY 270-622-8972**

**WWW.RSMILLSAUCTIONS.COM**

**TERMS & CONDITIONS: ALL BIDDERS MUST REGISTER WITH PHOTO ID. 15% DOWN DAY OF AUCTION. BALANCE DUE ON OR BEFORE 45 DAYS. 2025 PROPERTY TAXES PRORATED AT CLOSING. ALL HOMES BUILT BEFORE 1978 MAY CONTAIN LEAD BASE PAINT. PROSPECTIVE BUYERS ARE GIVEN 10 DAYS PRIOR TO AUCTION TO CONDUCT LEAD BASE PAINT TEST. BUYER WILL BE REQUIRED TO SIGN A WAIVER OF ALL POST SALE INSPECTIONS. ALL REAL ESTATE AND PERSONAL PROPERTY SOLD AS IS WHERE IS WITH NO WARRANTY EXPRESSED OR IMPLIED. 10% BUYERS PREMIUM ON ALL REAL ESTATE & EQUIPMENT. EQUIPMENT PAID IN FULL DAY OF AUCTION. ALL ANNOUNCEMENTS MADE DAY OF AUCTION TAKE PRECEDENCE OVER ALL ADVERTISEMENTS. SELLERS NOR AGENT RESPONSIBLE FOR ACCIDENTS.**





**FARM 1~TRACT 1**  
**1.03+/- ACRES**  
 (FRONTAGE ON HADE BELL RD )  
**FARM 1~TRACT 2**  
**1.01 ACRES+/- ACRES**  
 (FRONTAGE ON HADE BELL RD )  
**FARM 1~TRACT 3**  
**0.95+/- ACRES**  
 (FRONTAGE ON HADE BELL RD )  
**FARM 1~TRACT 4**  
**1.31+/- ACRES**  
 (FRONTAGE ON HADE BELL RD )  
**FARM 1~TRACT 5**  
**0.76+/- ACRES**  
 (FRONTAGE ON HADE BELL RD )  
**FARM 1~TRACT 6**  
**13.69+/- ACRES**  
 (FRONTAGE ON HADE BELL RD )  
**FARM 1~TRACT 7**  
**1.02+/- ACRES**  
 (FRONTAGE ON HADE BELL RD )  
**FARM 1~TRACT 8**  
**1.05+/- ACRES**  
 (FRONTAGE ON HADE BELL RD )  
**FARM 1~TRACT 9**  
**26.12+/- ACRES**  
 (FRONTAGE ON HADE BELL RD )  
**FARM 1~TRACT 10**  
**32.63+/- ACRES**  
 (FRONTAGE ON HADE BELL RD )  
**FARM 1~TRACT 11**  
**28.93+/- ACRES**  
 (FRONTAGE ON HADE BELL RD )  
**FARM 1~TRACT 12**  
**20.33+/- ACRES**  
 (FRONTAGE ON HADE BELL RD )

**FARM 2~TRACT 1**  
**2.31+/- ACRES**  
 (FRONTAGE ON MT UNION RD )  
**FARM 2~TRACT 2**  
**1.51 ACRES+/- ACRES**  
 (FRONTAGE ON MT UNION RD )  
**FARM 2~TRACT 3**  
**29.30+/- ACRES**  
 (FRONTAGE ON MT UNION RD )  
**FARM 2~TRACT 4**  
**24.75+/- ACRES**  
 (FRONTAGE ON MT UNION RD )  
**FARM 2~TRACT 5**  
**1.05+/- ACRES**  
 (FRONTAGE ON MT UNION RD )  
**FARM 2~TRACT 6**  
**1.78+/- ACRES**  
 (FRONTAGE ON HADE BELL RD )  
**FARM 2~TRACT 7**  
**1.54+/- ACRES**  
 (FRONTAGE ON HADE BELL RD )  
**FARM 2~TRACT 8**  
**19.24+/- ACRES**  
 (FRONTAGE ON HADE BELL RD )  
**FARM 2~TRACT 9**  
**1.08+/- ACRES**  
 (FRONTAGE ON HADE BELL RD )  
**FARM 2~TRACT 10**  
**17.68+/- ACRES**  
 (FRONTAGE ON HADE BELL RD )  
**FARM 2~TRACT 11**  
**12.81+/- ACRES**  
 (FRONTAGE ON HADE BELL RD )

