



AUCTION

716 GILLOCK ROAD - GLASGOW, KY



MAR
SATURDAY
7TH
1:00
PM

15.03+/- ACRES, 2 BEDROOM HOME, BARN

AUCTIONEERS: RUSSELL MILLS & MIKES HAYNES



TRACT 1: 3.20+/- ACRES, 2 BEDROOM, 2 FULL BATHS, LARGE LIVING ROOM, DINING ROOM, CENTRAL HEAT & AIR, COVERED FRONT PORCH, LARGE REAR DECK, MOVE IN READY, 1260+/- SQFT PER PVA, 2 HORSE BARN, FENCED PADDOCKS W/ COVERED RUN INS

TRACT 2: 5.62+/- ACRES, OPEN PASTURE LAND, HOMESITES

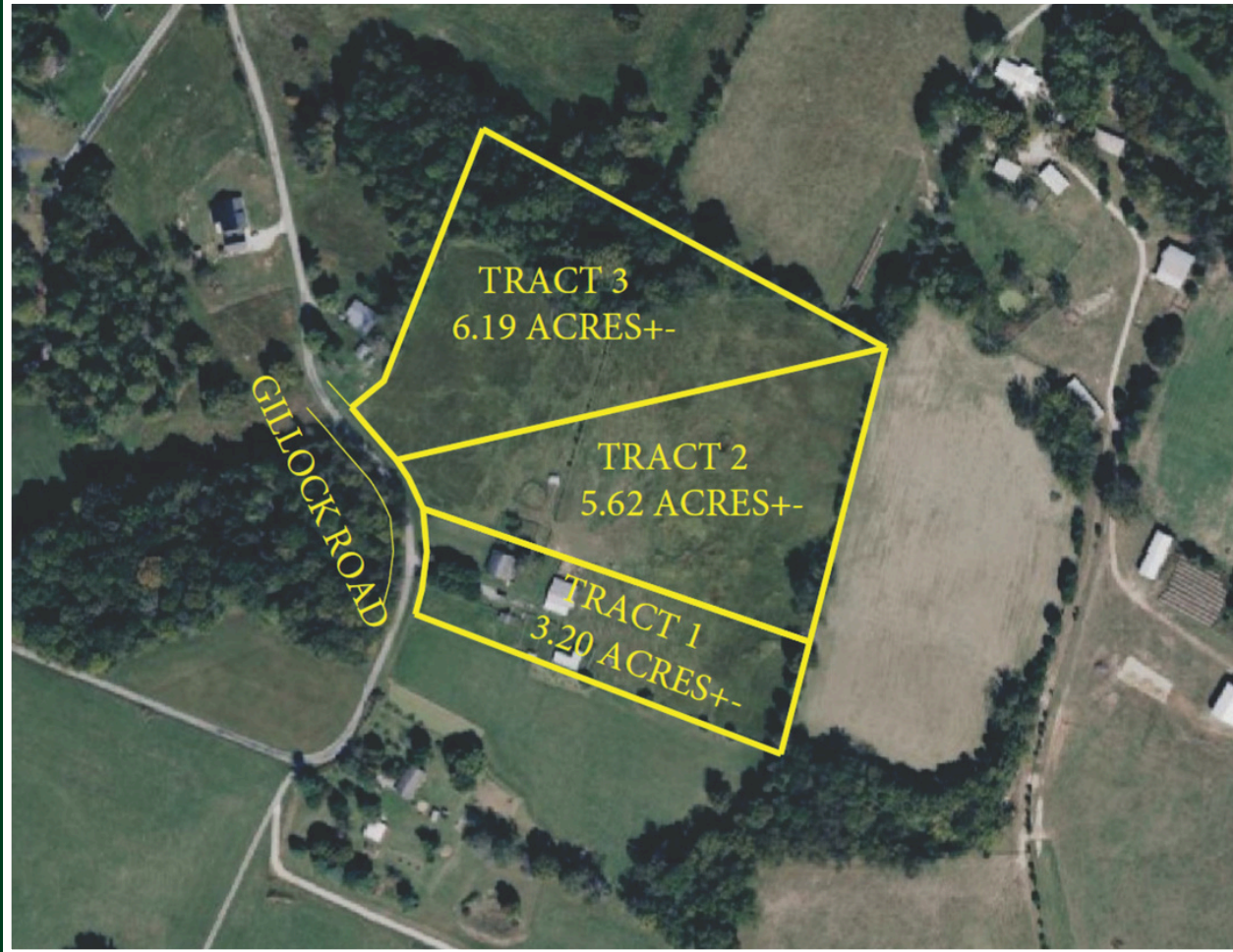
TRACT 3: 6.19+/- ACRES, OPEN PASTURE LAND, PARTIAL WOODED, HOMESITES



📞 270-618-7800
SANDY MILLS (BROKER)
RUSSELL MILLS (AUCTIONEER)

“A COMPANY YOU CAN TRUST WITH PROVEN RESULTS”

RSMILLSAUCTIONS.COM



TERMS & CONDITIONS: ALL BIDDERS MUST REGISTER WITH PHOTO ID. 10% DOWN DAY OF AUCTION. BALANCE DUE ON OR BEFORE 45 DAYS. SELLER PROVIDES GENERAL WARRANTY DEED. POSSESSION WITH DEED. 2026 PROPERTY TAXES PRORATED. ALL HOMES BUILT BEFORE 1978 MAY CONTAIN LEAD BASE PAINT. PROSPECTIVE BUYERS ARE GIVEN 10 DAYS PRIOR TO AUCTION TO CONDUCT LEAD BASE PAINT TEST. BUYER WILL BE REQUIRED TO SIGN A WAIVER OF ALL POST SALE INSPECTIONS. ALL REAL ESTATE AND PERSONAL PROPERTY SOLD AS IS WHERE IS WITH NO WARRANTY EXPRESSED OR IMPLIED. 10% BUYERS PREMIUM ON ALL REAL ESTATE. ALL ANNOUNCEMENTS MADE DAY OF AUCTION TAKE PRECEDENCE OVER ALL ADVERTISEMENTS. SELLERS NOR AGENT RESPONSIBLE FOR ACCIDENTS.

GARDEN TILLER , PRESSURE WASHER ,TOOLS, TOOLBOXES ,JIGSAW ,HANDSAW ,DOG PEN ,DOG HOUSE, LADDERS ,SHOVELS ,RAKES, POST HOLE DIGGER ,CULTIVATORS, WAGON RUNNING GEAR ,ROUND PEN GATES ,GAS CANS, SCRAP IRON ,HYDRAULIC OIL, EXTENSION CORDS ,YARD AERATOR ,WELDER ,AIR COMPRESSOR ,BATTERY CHARGER ,SEED SOWER, LIVE TRAPS ,METAL FENCE POST ,SAW HORSES ,HANDYMAN JACK ,TWO WHEELER ,WEED EATERS ,CAR, RAMPS, MASON JARS ,HEDGE TRIMMERS ,FENCE STRETCHERS, MORE



2019 GMC 1500 SIERRA 4WD V8 At4, 91K MILES

