

ABSOLUTE AUCTION

MAY
SATURDAY
17TH
10:00 AM

1722 HISEVILLE BEARWALLOW ROAD - CAVE CITY, KY
20.17 +/- ACRES FRONTAGE ON 2 ROADS - 5 TRACTS

**TRACT 1: 0.80 +/- ACRES, 2
BEDROOM HOME - ATTACHED
GARAGE - BLACKTOP DRIVE -
MATURE SHADE TREES FRONTAGE
ON HISEVILLE BEARALLOW ROAD
& BESSIE BASTIN ROAD**



**TRACT 2: 10.35 +/-
ACRES, BARN - FRONTAGE
ON HISEVILLE
BEARWALLOW ROAD &
BESSIE BASTIN ROAD**

ALL BIDDERS MUST REGISTER WITH A PHOTO ID. REAL ESTATE- 15% NON REFUNDABLE DEPOSIT DUE DAY OF AUCTION. BALANCE DUE ON OR BEFORE 45 DAYS. 10% BUYERS PREMIUM ON REAL ESTATE. POSSESSION WITH DEED. 2025 TAXES PRORATED AT CLOSING. ALL HOMES BUILT BEFORE 1978 MAY CONTAIN LEAD BASE PAINT. PROSPECTIVE BUYERS ARE GIVEN 10 DAYS PRIOR TO AUCTION TO CONDUCT LEAD BASE PAINT TEST. BUYER WILL BE REQUIRED TO SIGN A WAIVER OF ALL POST SALE INSPECTIONS. ALL ITEMS SELLING AS-IS WHERE-IS WITH NO WARRANTY EXPRESSED OR IMPLIED. ALL ANNOUNCEMENTS MADE DAY OF AUCTION TAKE PRECEDENCE OVER ALL ADVERTISEMENTS. SELLERS NOR AGENT RESPONSIBLE FOR ACCIDENTS.



**FOR MORE INFO
CALL AUCTIONEER:
KENNY ISENBERG
(270)-528-7892**

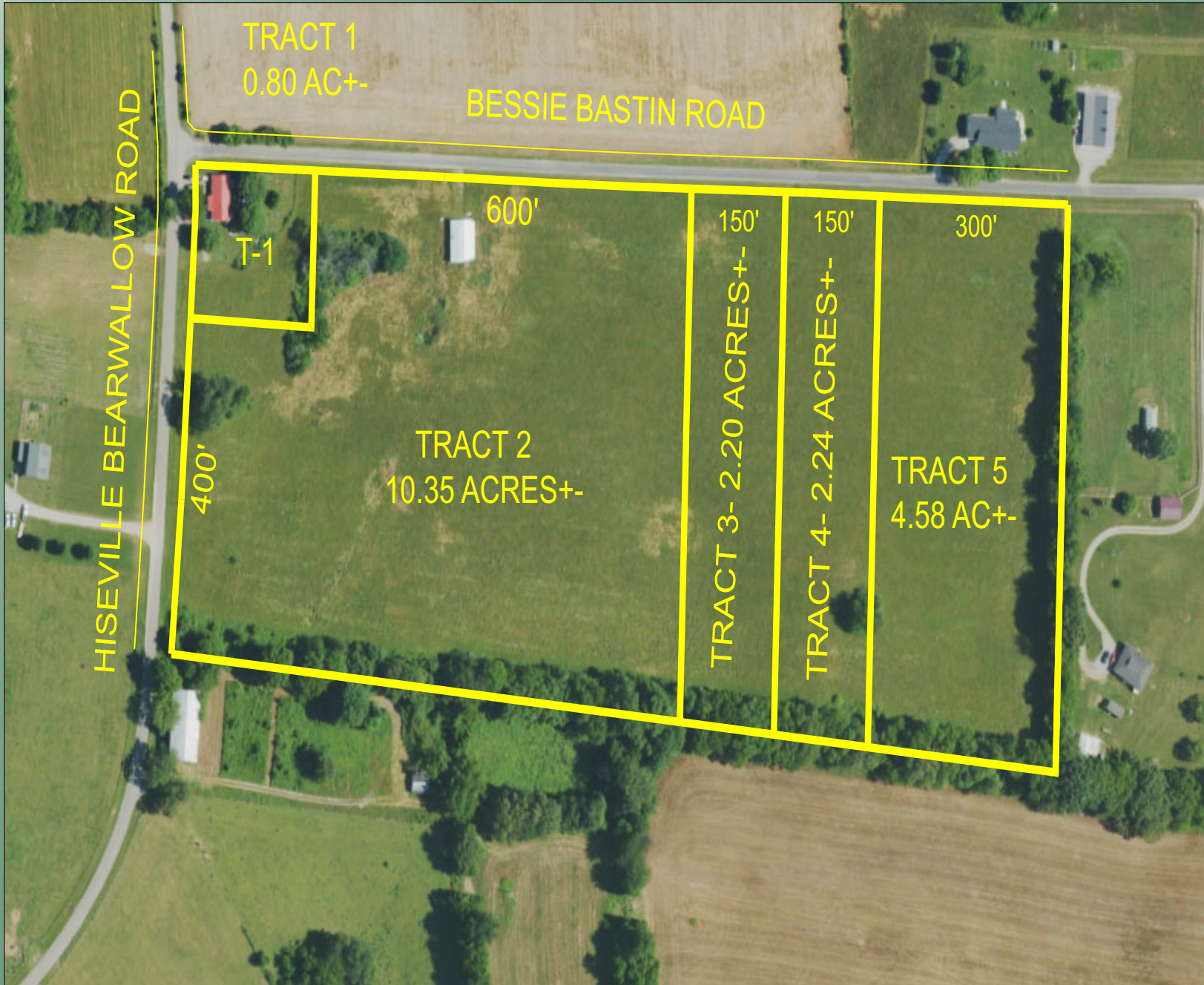
MILLS
REAL ESTATE & AUCTION CO.
SCOTTSVILLE - GAMALIEL - GLASGOW, LLC

Russell Mills
Auctioneer
270-237-7625

270-618-7800

Sandy Mills
Broker/Realtor
270-618-9560

WWW.RSMILLSAUCTIONS.COM



**TRACT 3: 2.20 +/- ACRES
FRONTAGE ON BESSIE BASTIN ROAD**

**TRACT 4: 2.24 +/- ACRES FRONTAGE
ON BESSIE BASTIN ROAD**

**TRACT 5: 4.58 +/- ACRES FRONTAGE
ON BESSIE BASTIN ROAD**



WWW.RSMILLSACTIONS.COM